

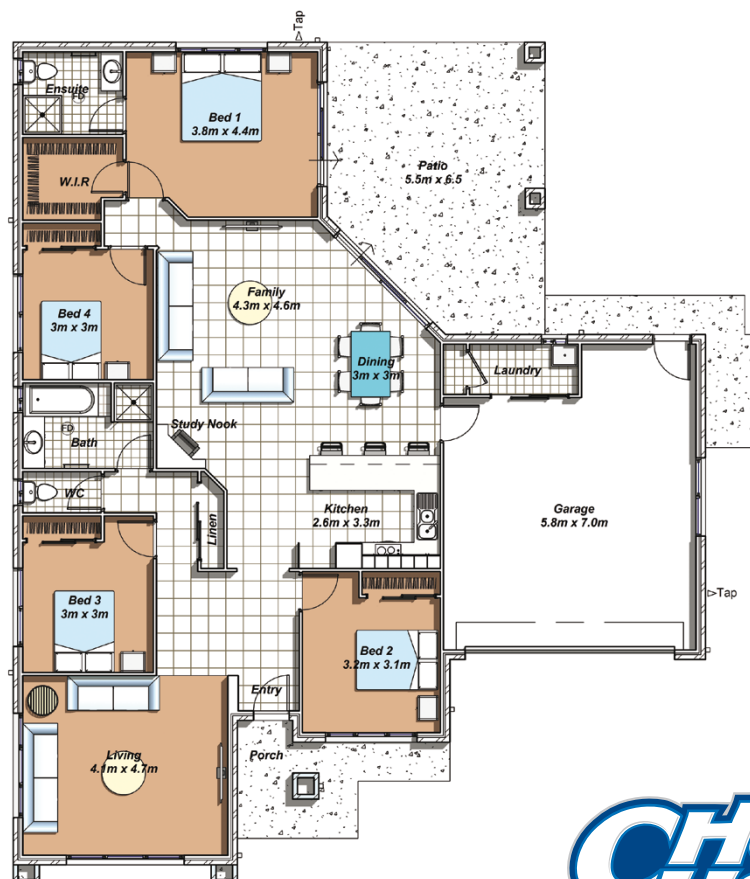
# Avalon

236.9 m<sup>2</sup> / 25.5 sq

4  2  2 



4 Bedrooms with B.I.R.'s | Ensuite to Master Bedroom and W.I.R. | Tiling to front entry and all wet areas | Separate Living / Dining room | Internal Feature walls | Open plan Family & Kitchen leading to Covered outdoor entertaining area | Modern Kitchen with Stainless Steel Appliances and breakfast bar | Ceiling Fans throughout | Double automatic garage with internal entry.



AVALON-1009

**CHOICE HOMES**<sup>tm</sup>  
Value by Choice.

Note: If image shows Colorbond roof and partial render this is extra from standard. House illustration is an artists impression only.

44 The Esplanade, PO Box 396, Paradise Point, Qld 4216. Ph: (07) 5501 3300 Fax: (07) 5501 3399. www.choicehomes.com.au Lic. No: 71541 - Lic. QBSA ACT 1991 A.B.N 45 061 632 862